

URBAN WANDERLUST

BY SOPHIA REIN

Tuesday | 7 May 2019



At EY we are committed to the local communities in which we operate and take pride in supporting local artists. This commitment is not a theoretical one, but a living reality. EY Luxembourg has decided to implement in its premises a series of showings dedicated to Luxembourgish artists and to Luxembourg as an international and cultural capital.

These exhibitions embody the wish of EY Luxembourg to support and encourage the artists while offering our people interesting opportunities for new insights. They also are re-assertion of the will we have to make our work environment an open place to outer work.

Born in Paris in 1971, Sophia lives in Luxembourg since 2006.

After a Master's Degree in law, a Diploma of the Institute of Political Studies in Strasbourg, where the role of art in society was her favourite subject, and a career in communication, Sophia decided 10 years later to return full-time to her first passion: ART!

Her most significant art education was to work in her mother's painting studio and to observe the work of her cousin, urban photographer.

A training in contemporary art history (MUDAM Akademie), in professional photography (Institut de la Photographie, Paris) and 2 years in art therapy (PCSA Luxembourg), accompany the evolution of her approach and in particular her very personal technique of "photo-painting", which she refines perpetually.

Sophia is a traveller and soul wanderer with a passion for urban landscape.

Looking at real life through a camera lens stimulates her creative need to adapt it, to make it more colourful and dynamic, more exciting!

The contrast between the reality of photography and the sometimes abstract artistic expression from a pen sketch, a touch of paint with a spatula or a vivid burst of freedom from an aerosol can, combines the freshness of the real life and the imagination, creating a new perspective of the world around us.

Inspired by the striking force of Pop Art, by the "new perceptual reality approaches" of New realism and especially by Martial Raysse's stunning work, pioneer in the use of neon, bold colours and artificial light make their way into Sophia's photo-paintings.

Constantly seeking new ways to intensify the artistic visual contrast and create new eye-catcher on our urban landscape, she recently started to use light installations on some selected photo-paintings (LED system and neon tube). Those recent photo-light-paintings express without any doubt her fascination for big city lights.

Sophia also loves to combine art and interior design. "It is amazing to see how a piece of artwork can change the energy in your living or working space...and so the energy in your head!", she says.

She developed a personalized art concept, that received recently the label Made in Luxembourg.





Main Projects

Currently working on a charity collection of 12 photo-paintings for the upcoming exhibition in June 2019 "Beautiful Women - Mother's Day 2019" for the Fondation Follereau Luxembourg

Design of a Champagne flute "Gelle Fra" for the Museal Editions, fournisseur de la Cour (2018/2019)

Design of a Christmas special edition "Schnéiflack" for Zakka Luxembourg and elephant parade

Design of Cappuccino cups for the private members club House 17, Luxembourg (December 2018)

Illustration of the 2018 calendar for The Editions Saint Paul

Essence Woman Art Award in 2017 (Exhibition Women's Essence, Paris)

Artworks exhibited on the walls of the Bertrange and Schuttrange town halls (2014, 2015)

Design of a peace medal in homage to Nelson Mandela for the World Peace Forum 2012

Main exhibitions

May 2019 - Personal exhibition, Domaine viticole Kox, Remich, Luxembourg

March 2019 - Personal exhibition "Gelle Fra - Beautiful Luxembourg", Luxemburger Wort, Luxembourg

December 2018 - Personal exhibition "Beautiful Luxembourg" - Cercle Munster, Luxembourg

November 2018 - Personal exhibition "Magie urbaine" - BoConcept Urban Design Luxembourg

July 2018 - Personal exhibition "Elegance urbaine", Badenoch & Clark, Luxembourg

July 2018 - Personal exhibition "Impressions de Luxembourg et d'ailleurs", Cour des comptes européenne, Luxembourg

June-July 2018 - Personal exhibition "Mini-Polaroids" Luxemburger Wort, Luxembourg

May-June 2018 - Personal exhibition "Elegance urbaine" House 17, Private member club, Luxembourg

May-June 2017 - Personal exhibition "Impressions urbaines", BIL, agence Weiswampach, Luxembourg

2017 - Common exhibition "Woman's Essence", Espace Communes, Gallery MUSEA Paris

2016 - "Urban Impression of Vienna" personal exhibition Austria Embassy, Luxembourg (permanent exhibition)

2015 - Art Fair, Salon d'automne International, Salon des Indépendants, St Petersburg

2015 - Common Exhibition "Spring", Galerie Place Suisse des Arts, Lausanne

2014 - Common Exhibition "Abroad" Broadway Gallery NYC New York

2014 - Common exhibition, Dreem Street Gallery Saint-Tropez

2013 - Personal exhibition "Art for peace" with the Schengen Peace Foundation, Musée de Schengen Luxembourg

2013, 2014 - Art Fair, Carrousel du Louvre, Paris

2013 - Art Fair, Business Art, Espace Cardin, Paris

2007-2017 - Art Fair, Art Zoom Québec

"PALAIS LUMIÈRE"

Luxembourg

Mix Media & Neon on pvc & aluminium

110x110

5.400€



"ROUE LUMIÈRE"

Shueberfouer

Mix Media & neon on pvc & aluminium

110x110

5.400€



"DOLCE LUXEMBOURG"

Rue Wiltheim, Luxembourg

Mix Media on pvc & aluminium

110x110
3.700€



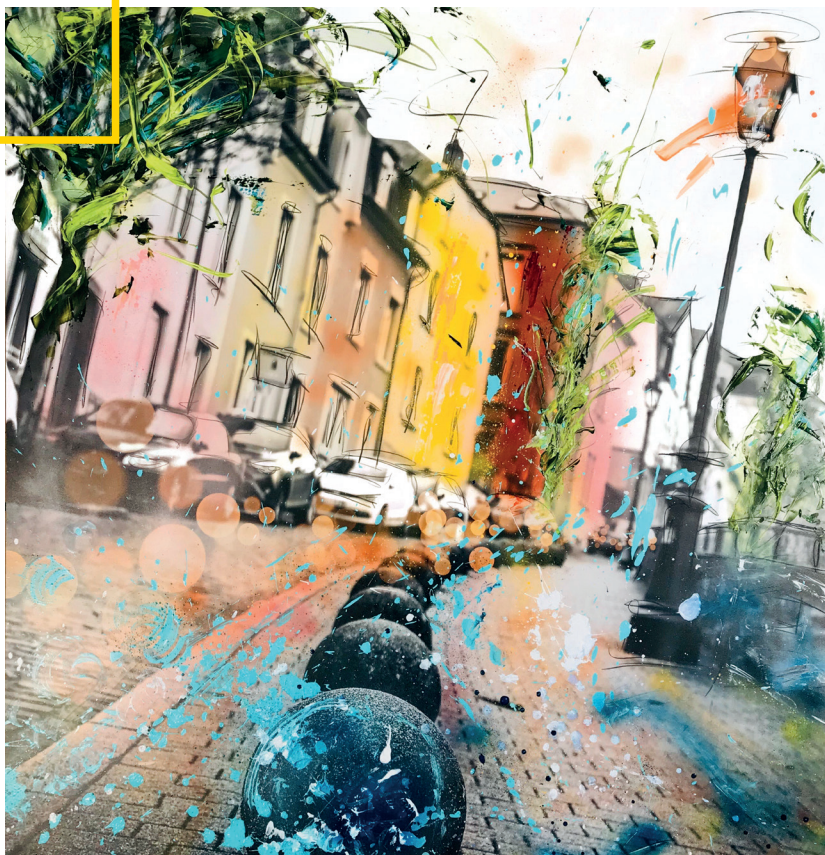
"MONTÉE DE LA PÉTRUSSE"

Luxembourg

Mix Media on pvc & aluminium

110x110

3.700€





"TAKE OFF"

Findel, Luxembourg

Mix Media on pvc & aluminium

110x110
3.700€



"VINTAGE"

Rue du Nord, Luxembourg

Mix Media on pvc & aluminium

110x110
3.700€



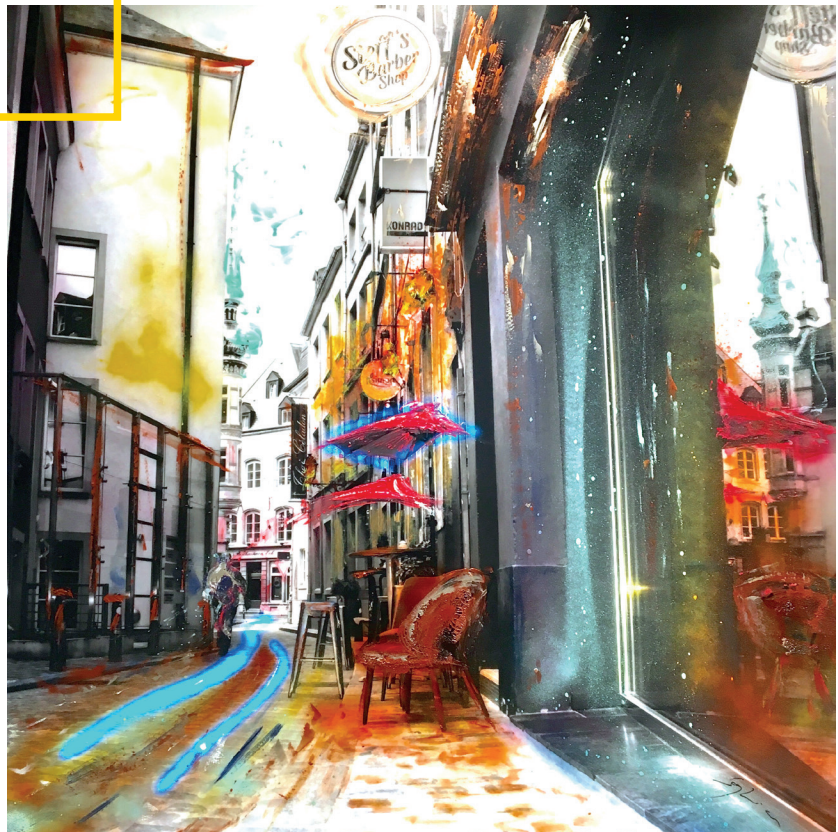


"RUE DU NORD"

Luxembourg

Mix Media & LED on plexiglas

100x100
3.500€





"LIGHTS, HARD ROCK CAFE"

Miami

Mix Media & LED on plexiglas

80x80
3.000€



"GOOD MORNING ST-TROPEZ!"

St-Tropez

Mix Media on pvc & aluminium

80x80
2.400€

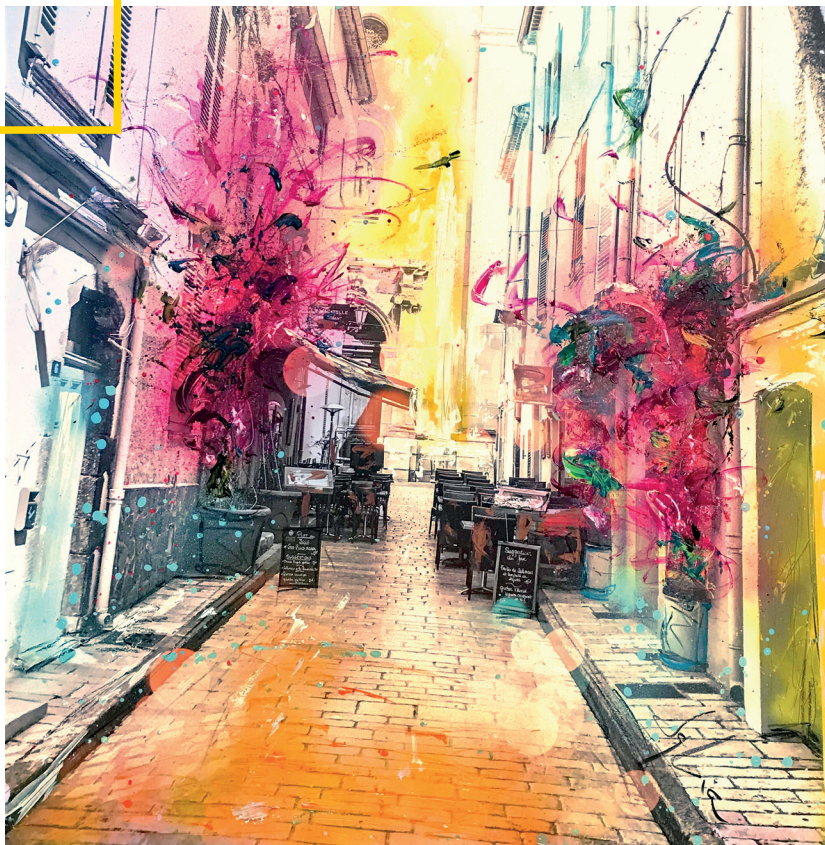


"RUE SYBILLE"

St-Tropez

Mix Media on pvc & aluminium

80x80
2.400€



"ST-TROPEZ!"

St-Tropez

Mix Media on pvc & aluminium

80x80
2.400€



"MUNICH"

Munich

Mix Media on pvc & aluminium

80x80
2.400€



"AU VIS-À-VIS"

Luxembourg

Mix Media on pvc & aluminium- inspired by the polaroid format

88x107

2.800€



"OCEAN DRIVE"

Miami

Mix Media on pvc & aluminium - Inspired by the polaroid format

88x107

2.800€



"MIAMI BEACH"

Miami

Mix Media on pvc & aluminium - Inspired by the polaroid format

88x107

2.800€



"CRAZY TIMES SQUARE"

New York

Mix Media on pvc & aluminium - Inspired by the polaroid format

88x107
2.800€

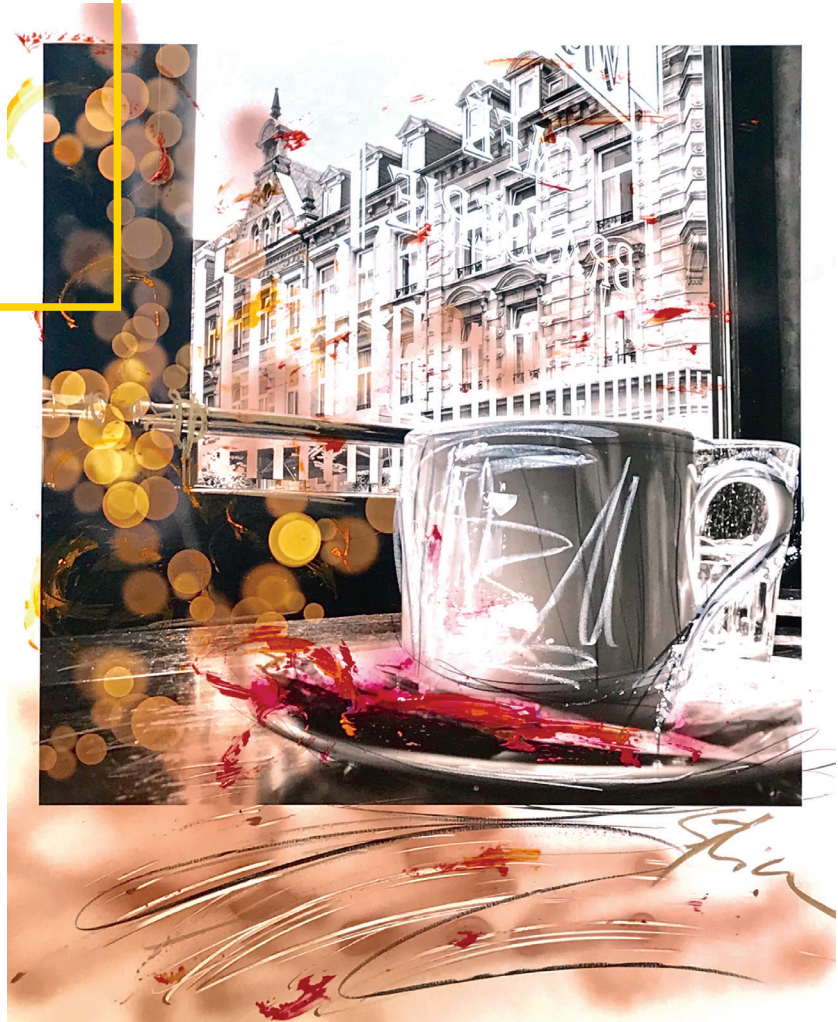


"ESPRESSO"

Café Bar Vis-à-Vis, Luxembourg

Mix Media on pvc & aluminium - Inspired by the polaroid format

52,8x64,2
950€



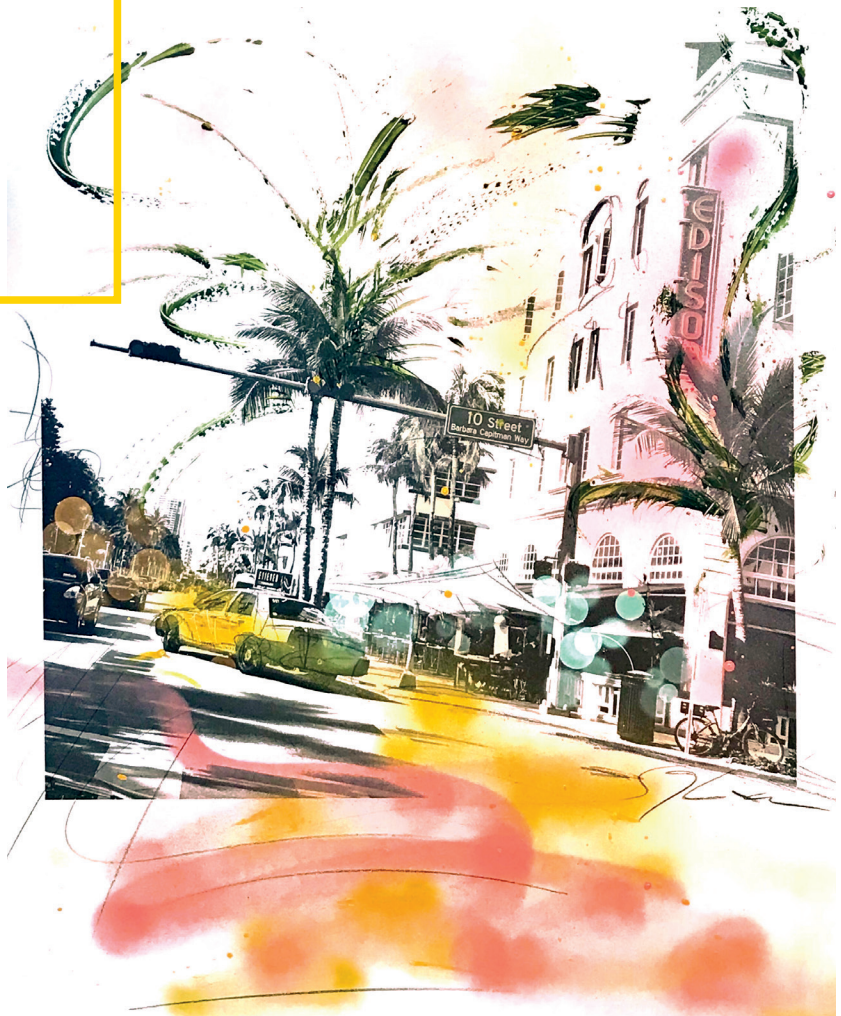
"10 STREET"

Miami

Mix Media on pvc & aluminium - Inspired by the polaroid format

52,8x64,2

950€





"PIAZZA"

Paris

Mix Media on pvc & aluminium - Inspired by the polaroid format

52,8x64,2
950€





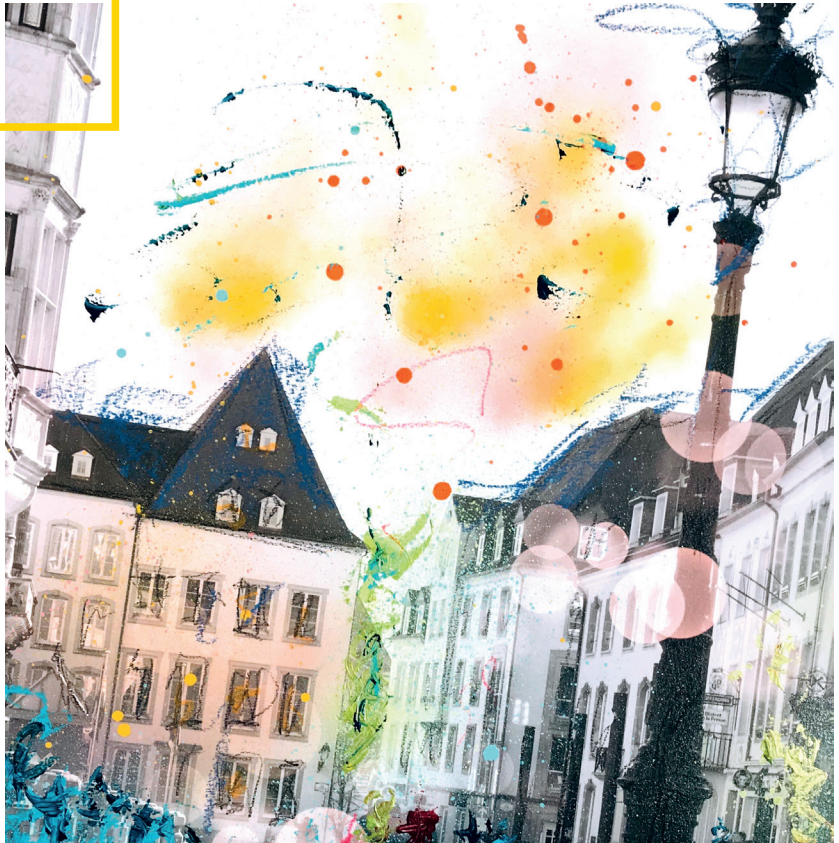
"RUE DU MARCHÉ AUX HERBES"

Luxembourg

Mix Media on framed watercolor paper

40x40

450€



"RUE DU NORD"

Luxembourg

Mix Media on framed watercolor paper

40x40

450€





"RUE DU SAINT-ESPRIT"

Luxembourg

Mix Media on framed watercolor paper

40x40
450€



"RUE PHILIPPE II"

Luxembourg

Mix Media on framed watercolor paper

40x40

450€



"MOUVEMENT"

Luxembourg

Mix Media on framed watercolor paper

40x40

450€



"COURS SALEYA"

Nice

Mix Media on framed watercolor paper

40x40
450€



"MANHATTAN BRIDGE"

New York

Mix Media on framed watercolor paper

40x40

450€



"NICE"

Palais de la Préfecture, Nice

Mix Media on framed watercolor paper

40x40
450€



"NOIR & BLANC"

Cour du Palais Royal, Paris

Mix Media on framed watercolor paper

40x40

450€



"REFLET"

Cour du Palais Royal, Paris

Mix Media on framed watercolor paper

40x40
450€



Notes

Notes



Contacts

Hélène Tomezak
EY Luxembourg
helene.tomezak@lu.ey.com

SOPHIA REIN
artphoto-sophia.com | mail@art-sophia.com

